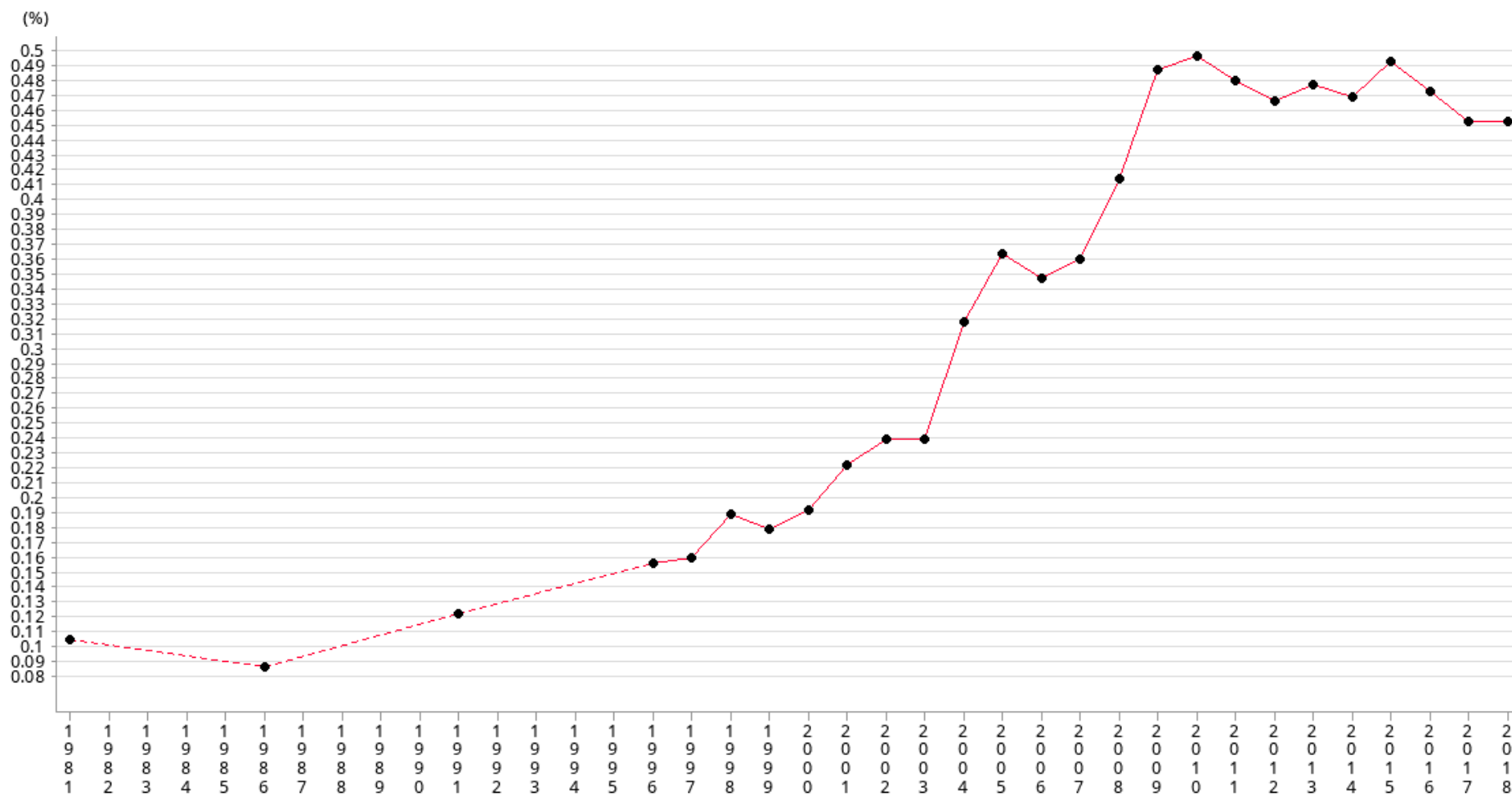


Social Indicators of Hong Kong

Private charitable donations as percentage of Gross Domestic Product



Year	1981	1986	1991	1996	1997	1998	1999	2000	2001	2002	2003	2004	2005	2006	2007
%	0.10	0.09	0.12	0.16	0.16	0.19	0.18	0.19	0.22	0.24	0.24	0.32	0.36	0.35	0.36

Year	2008	2009	2010	2011	2012	2013	2014	2015	2016	2017	2018
%	0.41	0.48	0.49	0.48	0.46	0.47	0.47	0.49	0.47	0.45	0.45

Operational Definitions

Approved charitable donation means a donation of money to any charitable institution or trust of a public character which is exempt from tax under s88 of the Inland Revenue Ordinance or to the Government, for charitable purposes.

Footnote

All figures are collected from Inland Revenue Department from 1981 and refer to financial year, e.g. figure for 1980-81 is used for 1981.