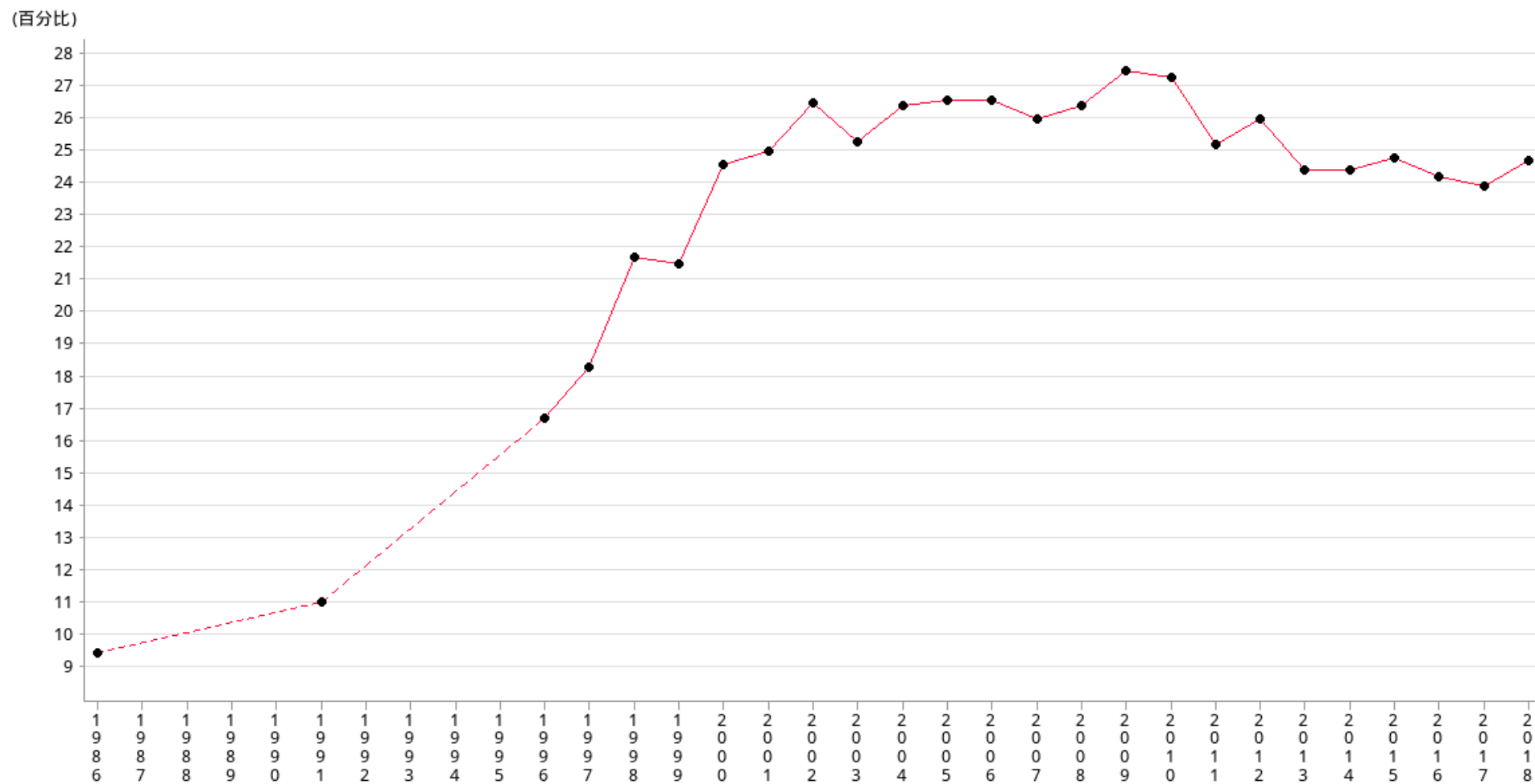


## 居住在低收入家庭住戶的15-19歲青少年佔所有家庭住戶內15-19歲人口的百分比



|     |      |      |       |       |       |       |       |      |       |       |       |       |       |      |
|-----|------|------|-------|-------|-------|-------|-------|------|-------|-------|-------|-------|-------|------|
| 年份  | 1986 | 1991 | 1996  | 1997  | 1998  | 1999  | 2000  | 2001 | 2002  | 2003  | 2004  | 2005  | 2006  | 2007 |
| 百分比 | 9.40 | 11   | 16.70 | 18.30 | 21.70 | 21.50 | 24.60 | 25   | 26.50 | 25.30 | 26.40 | 26.60 | 26.60 | 26   |

|     |       |       |       |       |      |       |       |       |       |       |       |
|-----|-------|-------|-------|-------|------|-------|-------|-------|-------|-------|-------|
| 年份  | 2008  | 2009  | 2010  | 2011  | 2012 | 2013  | 2014  | 2015  | 2016  | 2017  | 2018  |
| 百分比 | 26.40 | 27.50 | 27.30 | 25.20 | 26   | 24.40 | 24.40 | 24.80 | 24.20 | 23.90 | 24.70 |

操作定義

The percentage of persons aged 15-19 in low-income domestic households, based on the General Household Survey which covers the land-based non-institutional population of Hong Kong. Low-income households refer to those domestic households with monthly household income less than or equal to half of the median monthly domestic household income of the corresponding household size (up to 6 and over).

備註

All figures are collected from Census and Statistics Department since 1986.  
According to C&SD (25Sep2009), starting from the year 2001, annual figures derived from the General Household Survey (GHS) may be different from those in the earlier edition. For the previous edition, the annual figures are compiled based on the average data for the four quarters of the year concerned. Starting from this edition, these statistics are compiled based on data collected in the General Household Survey from January to December of the year concerned as well as mid-year population estimates.