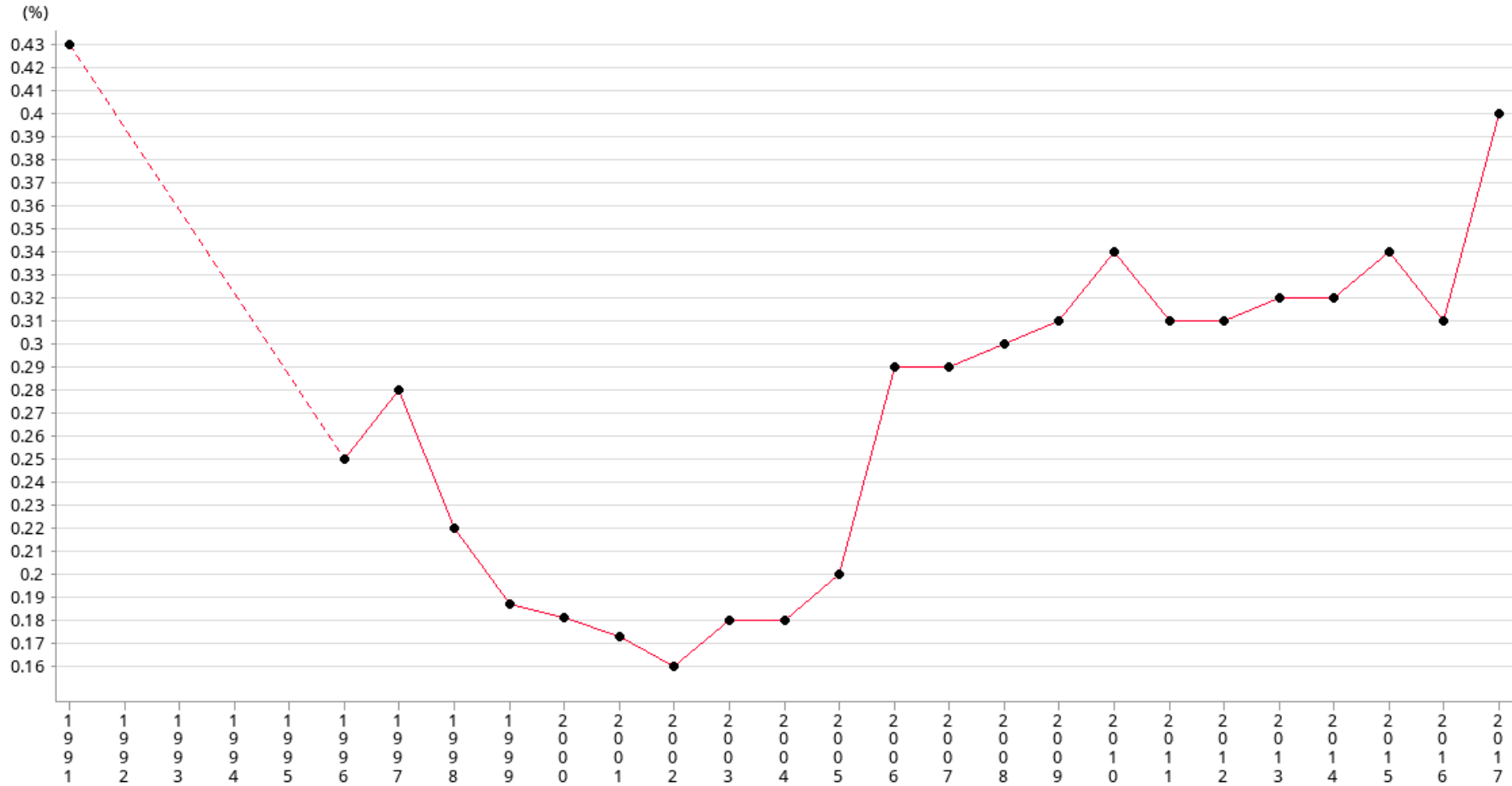


Social Indicators of Hong Kong
Non-attendance rate (in percentage)



Year	1991	1996	1997	1998	1999	2000	2001	2002	2003	2004	2005	2006	2007	2008	2009
%	0.43	0.25	0.28	0.22	0.19	0.18	0.17	0.16	0.18	0.18	0.20	0.29	0.29	0.30	0.31

Year	2010	2011	2012	2013	2014	2015	2016	2017
%	0.34	0.31	0.31	0.32	0.32	0.34	0.31	0.40

Operational Definitions

Non-attendance rates refer to children aged 6 to 15 who leave school education without completing Secondary 3 (excluding those leaving Hong Kong). Non-attendance rate is calculated by the following formula: No. of cases/Total no. of P1-S3 students x 100%. The original source of the data is Placement and Support Section, Education Bureau.

Footnote

Figures are collected from the Education Bureau.

Figures refer to academic year, e.g., figure for 2017/18 is used for 2017.